

PRICING

There are a range of time dependent pricing options available to suit everyone's needs.

Full Membership	\$250.00
Standard Membership Discount ¹	\$200.00
Early Membership Discount ²	\$150.00
Student / Concession	\$130.00
Secondary School Student	\$100.00
Supporting	\$20.00
Day Rates	Various (TBC)
12 years of age or younger	Free

1 - For the period from Nat Con 2005 until Feb 28, 2006

2 - Until Nat Con 2005

WHY QUEENSLAND?

You mean, apart from being the Sunshine capital of Australia, the fact that it has been more than 10 years since Brisbane saw a Nat Con or apart from our dedicated committee and community and government support?

Well, Brisbane is the ideal place for a Nat Con. Modern, dynamic, sophisticated, Australia's fastest growing capital city combines value for money and state of the art facilities with a friendly, relaxed atmosphere.

We enjoy a secure and safe location and an attractive yet affordable conference destination.

► **Perfect Climate** – We had to mention the weather. Brisbane is Australia's only sub-tropical capital city, providing delegates with an enviable climate of bright summers and warm, mild winters - which makes Easter a great time to visit.

► **Compact City** – Brisbane is a modern, user-friendly city, providing delegates with the luxury of being close to all facilities in the downtown area.

► **Convenient Domestic Access** – Convenient and flexible access for national delegates. Regular flights to Brisbane are available from many cities throughout Australia.

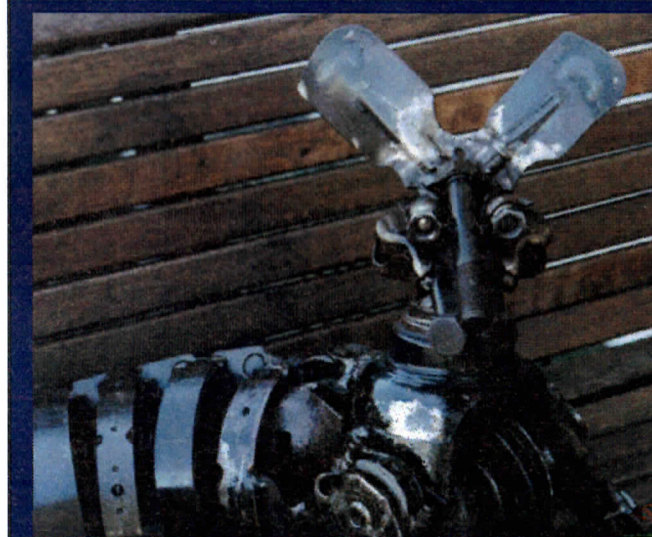
► **Local Public Transport** – Travelling in Brisbane is efficient and easy for everyone, with special facilities available including specialised convention delegate transit cards.

► **Social Program** – Brisbane offers delegates and their partners a diverse range of new and unique attractions, shopping precincts including the Queen Street Mall and Fortitude Valley, river cruises, alfresco restaurants and cafes.

► **Value for Money** – Highly competitive on-ground costs makes accommodation, airport transfers, dining and shopping affordable for all delegates.

► **Pre and Post Touring** – The Brisbane Region offers a unique Queensland experience with pre and post touring options to suit all tastes and budgets - beaches, resorts, islands, rainforest hideaways, theme parks and wineries, all of which are situated within easy reach of the city.

To find out more visit
www.fantasticqueensland.com
or email
conjure@optusnet.com.au



The Time Has Come

A National Speculative Fiction
Convention Bid for Brisbane 2006



Dedicated to a better Brisbane



OUR VISION

Conjure offers you an ambitious program with all the regular events you've come to love - with

something a little extra as well.

- ▶ International guest
- ▶ High profile Australian guests
- ▶ A showcase of local professionals from all aspects of Speculative Fiction
- ▶ Panels, functions and events celebrating Speculative Fiction in all its many forms including:
 - ◆ 24hr movie room
 - ◆ Gaming Room (electronic and traditional)
 - ◆ Animation
 - ◆ Literary Stream
 - ◆ Pop Culture

We are also planning a special professional program to run at the same time which will involve conference delegates, the general public and all of Brisbane.

Put simply, **Conjure** is for everyone.

OUR TEAM

Made up of prominent members of Speculative Fiction community, our planning team has a range of skills designed to make 2006 an incredible experience.

Supported by the Brisbane City Council, Brisbane Marketing, the Queensland State Government and auspiced by Fantastic Queensland, our team consists of professional conference organisers with many years of event management experience - who all happen to love Speculative Fiction as well.

The team includes people like Damon Cavalchini, Rowena Lindquist (Cory Daniels), Heather Gent, Robert Hoge, Kate Eltham and Richard Pitchforth

FANTASTIC QUEENSLAND

Fantastic Queensland fosters the creation, growth and development of speculative fiction in all its forms. It aims to nurture professional development, help creators of speculative fiction to network and increase opportunities for industry and government participation.

Amongst its many achievements FQ is responsible for :

- ▶ Bringing the highly successful Clarion Writers Workshop down under
- ▶ Creating the EnVision Workshop and Manuscript critique program
- ▶ Auspicing key cultural events such as the Summer of Speculative Fiction and Computer Games development competitions

Find out more about our activities at:

www.fantasticqueensland.com



ACCOMMODATION AND VENUE

Conjure promises a new world under the one neon lit roof.

The Mercure Hotel offers high quality, affordable accommodation and will play host to most panels and functions.

Located on the banks of the Brisbane River, overlooking South Bank Parklands, the Mercure is just minutes from the Treasury Casino and Cultural Centre and is adjacent to Queen Street Shopping Mall - the heart of Downtown Brisbane.

Room Facilities

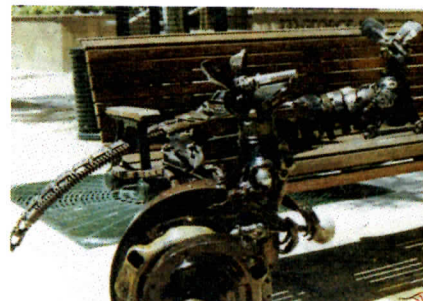
- ▶ Non-smoking and smoking rooms available
- ▶ STD/ISD telephone
- ▶ TV and internet connection
- ▶ In-house movies
- ▶ Coffee / Tea making facilities
- ▶ Mini-bar and fridge
- ▶ Individually controlled air-conditioning

Alternative accommodation is also available at the adjoining sister property, Hotel Ibis Brisbane. A special walkway between the two hotels allows delegates to move easily between the conference area and their accommodation.

A special Conjure Accommodation Package will be available:

Mercure Hotel Brisbane: \$148.00 single/twin/double in a city view room. Upgrade to a room overlooking the Brisbane River for an extra \$30.00/night. Studio and Executive Suites will also be available. Breakfast in Quays Restaurant is \$20.00 per person.

Hotel Ibis Brisbane: \$119.00 single/twin share. Buffet



breakfasts are available in the Brasserie du Jour for \$18.00/ person.